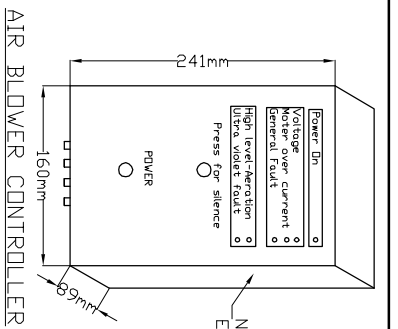
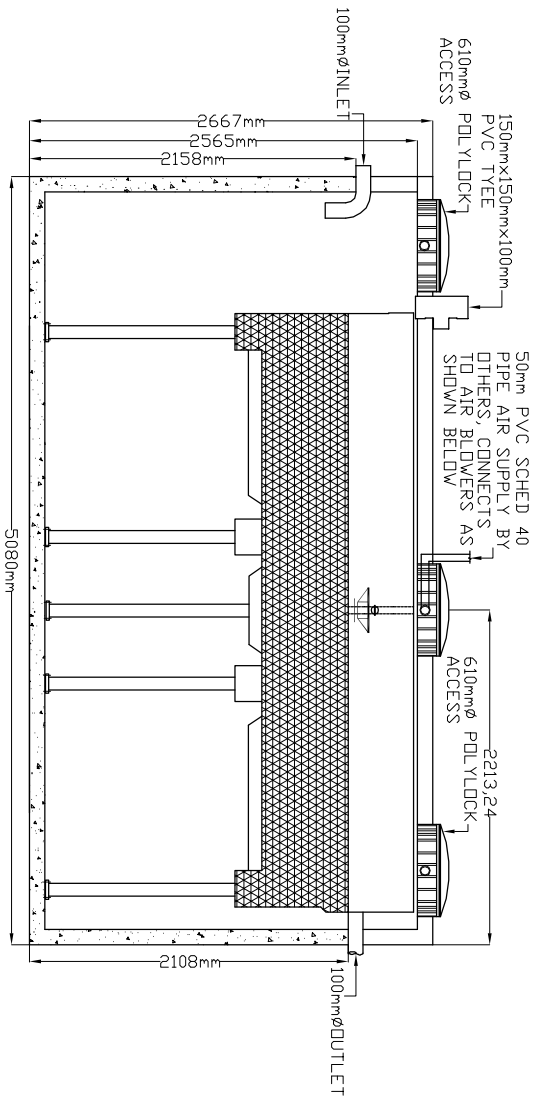


LID TOP VIEW

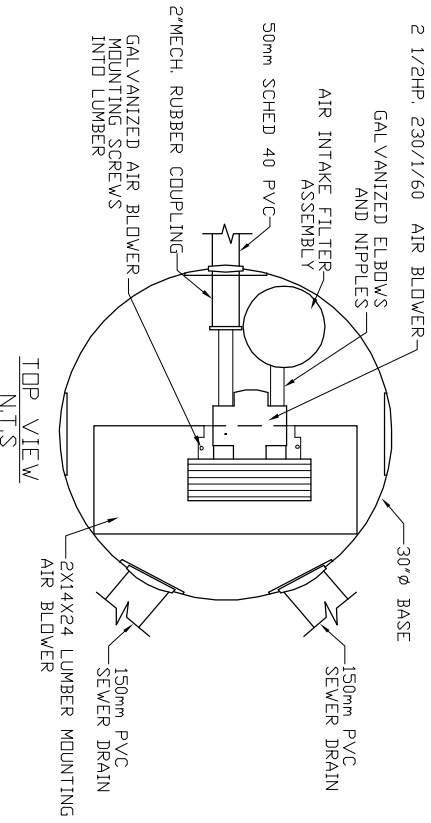


AIR BLOWER CONTROLLER
N.T.S.

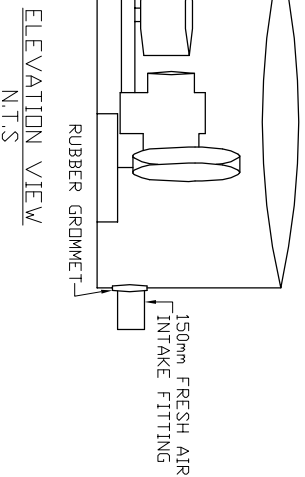


AIR BLOWER INGROUND VAULT

SIDE VIEW



TOP VIEW
N.T.S.



ELEVATION VIEW
N.T.S.

- MicroFAST® 4.5
TANK MANUFACTURED BY
MANCO PRECAST INC.
SYSTEM IS DELIVERED FACTORY
PRE-ASSEMBLED
- CONCRETE TANK MANUFACTURER'S MODEL NO: 5000-IPC-10H REFER TO MANUFACTURER'S SPECIFICATION FOR TANK AND BURIAL INSTALLATION GUIDELINES
 - OPERATING CONDITION 17,034 LITRES (4500 us gals)(3750 imp gals) PER DAY OF DOMESTIC RESIDENTIAL SEWAGE
 - TRASH COLLECTION TANK SHALL BE A MINIMUM OF 1/2 AND A MAXIMUM OF 1.5 TIMES THE DAILY DESIGN FLOW AND PROVIDED BY OTHERS.
 - INFLUENT
 - BOD = 250 mg/l
 - TSS = 250 mg/l
 - FATS, OIL GREASES = 35 mg/l
 - EFFLUENT (capabilities)
 - BOD = 10 mg/l
 - TSS = 10 mg/l
 - TOTAL NITROGEN = 70% Reduction
 - VOLUME METRIC CAPACITY SINGLE CHAMBER = 22,730 L
 - DRY SHIPPING WEIGHT 22,413 kg
 - BURIAL DEPTH MAXIMUM EARTH COVER (AND CLAY) 610mm
 - FOR INSTALLATION, REFER TO CSA B66, BC SEWERAGE SYSTEM STANDARD PRACTICE MANUAL AND INSTALLATION GUIDELINES PUBLISHED BY PINNACLE ENVIRONMENTAL TECHNOLOGIES INC.
 - DIMENSIONS in mm.
 - INLET AND OUTLET ACCEPT 100mm S/D COUPLING
 - EXTENSION FOR SERVICE ACCESS HATCHES AVAILABLE ON REQUEST.
 - MAXIMUM EARTH COVER AS MEASURED FROM TANK TOP CENTRE LINE (NOT INCLUDING RISERS) IS 610mm.
 - FOR HIGH WATER TABLE INSTALLATION CONTACT PINNACLE PRIOR TO ORDERING.
 - FOR VEHICLE TRAFFIC CONTACT PINNACLE PRIOR TO ORDERING.

Drawing Title:	General Arrangement Layout	Project Title/Description MicroFAST® 4.5	Pinnacle Environmental Technologies Inc. Mailing Add: Location: P.O. Box 12112 22867-FraserHwy, Langley, Bc, V3A 9J Langley, Bc Ph: 604-514-7555 Fax: 604-514-7595 Email: info@peti.ca WebSite: www.peti.ca	
Revision No:	MSS MFC 4.5-1-01			
Sheet No:	1 of 1			
Date:	07, Sept, 2011	Drawn By:	S. Mann	
Scale:	1:50			