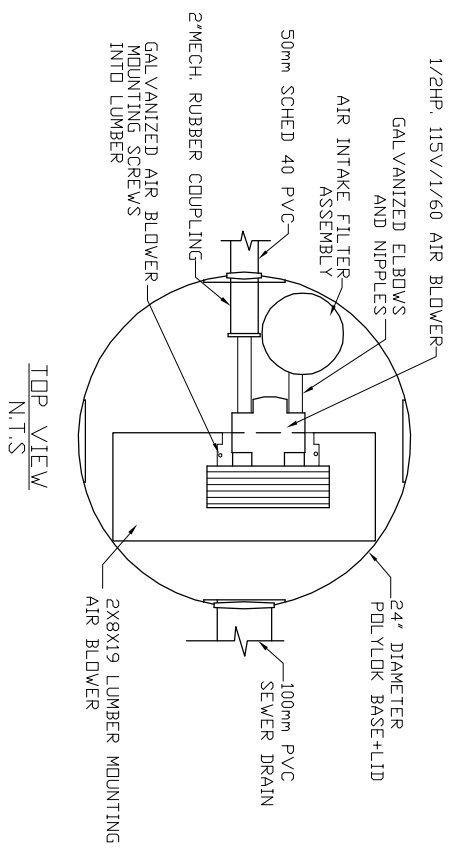
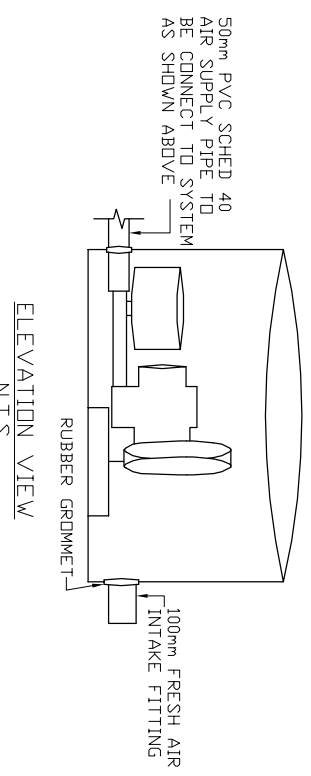


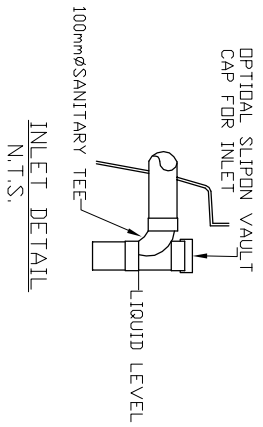
AIR BLOWER INGROUND VAULT



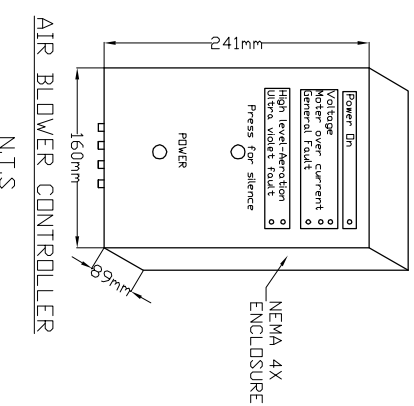
TOP VIEW  
N.T.S.



ELEVATION VIEW  
N.T.S.



INLET DETAIL  
N.T.S.



AIR BLOWER CONTROLLER  
N.T.S.

- MicroFAST® 1.0  
TANK MANUFACTURED BY  
MANDO PRECAST INC
- SYSTEM IS DELIVERED FACTORY  
PRE-ASSEMBLED  
CONCRETE TANK MANUFACTURER'S MODEL  
ND-1200-1PC-2CH  
REFER TO MANUFACTURERS SPECIFICATION  
FOR TANK AND BURIAL  
INSTALLATION GUIDELINES
- OPERATING CONDITION  
3,791 LITRES (1000 US GALS)(834 IMP GALS)  
PER DAY OF DOMESTIC RESIDENTIAL SEWAGE  
INFLUENT
- BOD = 250 mg/l  
TSS = 250 mg/l  
FATS, OIL GREASES = 35 mg/l
- EFFLUENT (capabilities)  
BOD = 10 mg/l  
TSS = 10 mg/l  
TOTAL NITROGEN = 70% Reduction
- VOLUMETRIC CAPACITY  
1ST CHAMBER = 1,891 L  
2ND CHAMBER = 2,841 L
- DRY SHIPPING WEIGHT  
4763 kg
- BURIAL DEPTH  
MAXIMUM EARTH COVER (NO CLAY) 610mm
- FOR INSTALLATION, REFER TO CSA B66,  
BC SEWERAGE SYSTEM STANDARD  
PRACTICE MANUAL AND INSTALLATION  
GUIDELINES PUBLISHED BY PINNACLE  
ENVIRONMENTAL TECHNOLOGIES INC.
- DIMENSIONS in mm.
- INLET AND OUTLET ACCEPT 100mm S/D COUPLING
  - EXTENSION FOR SERVICE ACCESS HATCHES AVAILABLE ON REQUEST.
  - MAXIMUM EARTH COVER AS MEASURED FROM TANK TOP CENTRE LINE (NOT INCLUDING RISERS) IS 610mm.
  - FOR HIGH WATER TABLE INSTALLATION CONTACT PINNACLE PRIOR TO ORDERING.
  - FOR VEHICLE TRAFFIC CONTACT PINNACLE PRIOR TO ORDERING.

Drawing No:	MSS MFC 1.0-2-01	Project Title/Description  MicroFAST 1.0	Pinnacle Environmental Technologies Inc. Mailing Add: 22867-FraserHwy, P.O. Box 12112 Langley, BC Langley, BC V3A 9J Ph: 604-514-7555 Fax: 604-514-7595 Email: info@peti.ca WebSite: www.peti.ca	
Revision No:	0			
Sheet No:	1 of 1	Drawn By: S. Mann Scale: 1:50 Date: 12.Oct.2011		