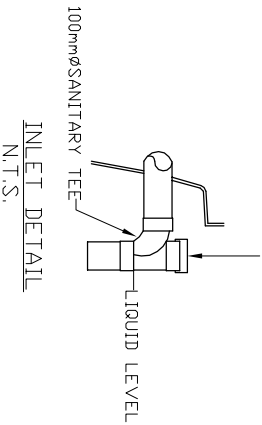
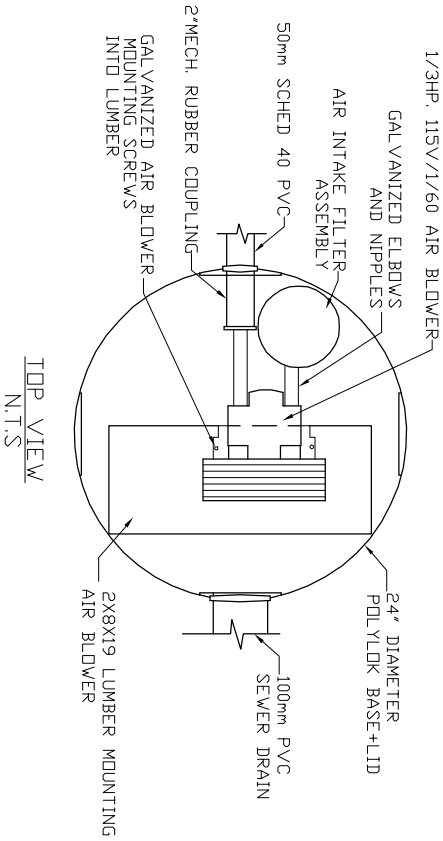
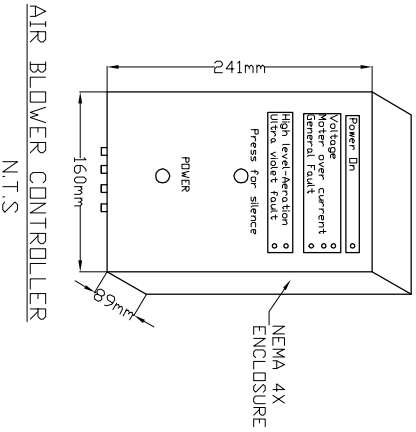


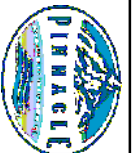
**AIR BLOWER INGROUND VAULT**



OPTICAL SLIP-ON CAP  
ON INLET WITH PULL-OFF  
CORD TO GRADE BY OTHERS



- MicroFAST<sup>®</sup> 0.9  
TANK MANUFACTURED BY  
MANCO SEPTIC SOLUTIONS
- SYSTEM IS DELIVERED FACTORY  
PRE-ASSEMBLED
1. CONCRETE TANK MANUFACTURER'S MODEL NO: 1200-1PC-2CH REFER TO MANUFACTURER'S SPECIFICATION FOR TANK AND BURIAL INSTALLATION GUIDELINES
  2. OPERATING CONDITION  
3407 LITRES (900 us gals) (750 imp gals) PER DAY OF DOMESTIC RESIDENTIAL SEWAGE
  3. INFLUENT  
BOD = 250 mg/l  
TSS = 250 mg/l  
FATS, OIL GREASES = 35 mg/l
  4. EFFLUENT (capabilities)  
BOD = 10 mg/l  
TSS = 10 mg/l  
TOTAL NITROGEN = 70% Reduction
  5. VOLUMETRIC CAPACITY  
1ST CHAMBER = 1,816 L  
2ND CHAMBER = 3,639 L
  6. DRY SHIPPING WEIGHT = 4,763 kg
  7. BURIAL DEPTH  
MAXIMUM EARTH COVER (ND CLAY) 610mm
  8. FOR INSTALLATION, REFER TO CSA B66, BC SEWERAGE SYSTEM STANDARD PRACTICE MANUAL AND INSTALLATION GUIDELINES PUBLISHED BY PINNACLE ENVIRONMENTAL TECHNOLOGIES INC.
  9. DIMENSIONS in mm.
  10. INLET AND OUTLET ACCEPT 100mm S/D COUPLING
  11. EXTENSION FOR SERVICE ACCESS HATCHES AVAILABLE ON REQUEST.
  12. MAXIMUM EARTH COVER AS MEASURED FROM TANK TOP CENTRE LINE (NOT INCLUDING RISERS) IS 610mm.
  13. FOR HIGH WATER TABLE INSTALLATION CONTACT PINNACLE PRIOR TO ORDERING.
  14. FOR VEHICLE TRAFFIC CONTACT PINNACLE PRIOR TO ORDERING.



Pinnacle Environmental Technologies Inc.  
Mailing Add: 22867-FraserHwy,  
P.O. Box 12112 Langley, BC  
Langley, BC, V3A 9J  
Ph: 604-514-7555 Fax: 604-514-7595  
Email: info@peti.ca  
WebSite: www.peti.ca

Project Title/Description

MicroFAST<sup>®</sup> 0.9

Drawn By: S. Mann

Scale: 1:50

Date: 12.Oct.2011

Drawing No:

MSS MFC 0.9-2-01

Revision No:

0

Sheet No:

Page 1 of 1