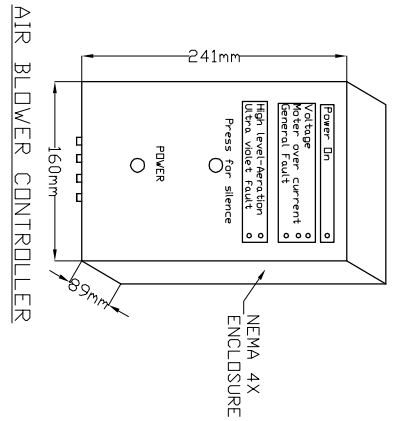
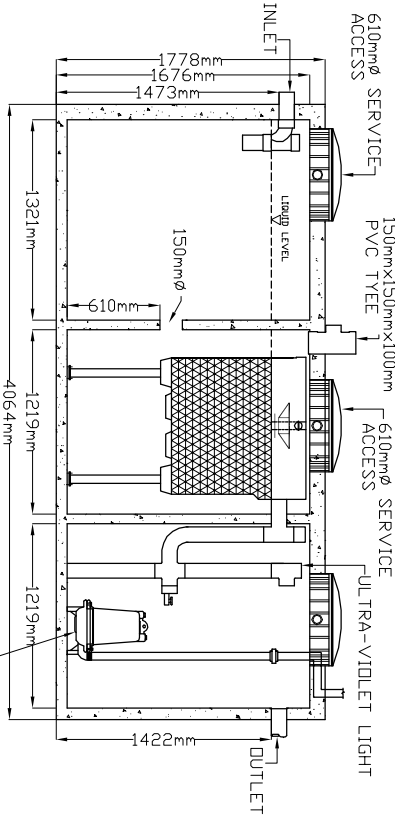


LID TOP VIEW

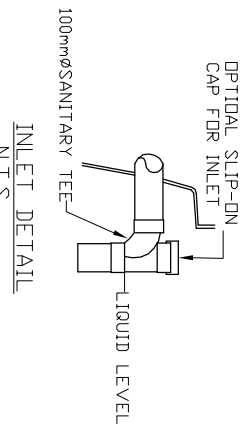


N.T.S.

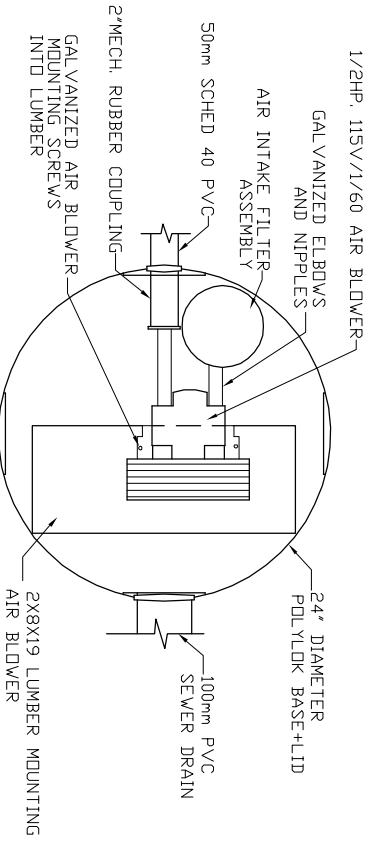


SIDE VIEW

AIR BLOWER INGROUND VAULT

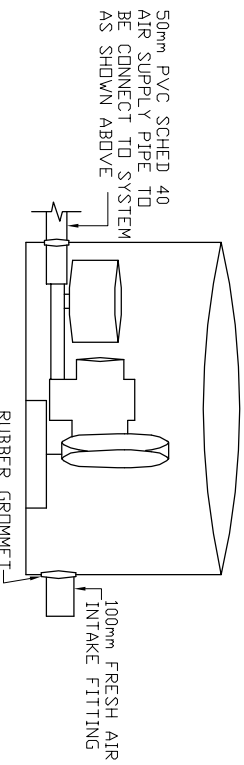


N.T.S.



TOP VIEW


N.T.S.



ELEVATION VIEW

N.T.S.

- MicroFAST®1.0
TANK MANUFACTURED BY
FRASERWAY PRECAST LTD
- SYSTEM IS DELIVERED FACTORY
PRE-ASSEMBLED
- CONCRETE TANK MANUFACTURERS MODEL
ID: 2,000-1PC-3CH
REFER TO MANUFACTURERS SPECIFICATION
FOR TANK AND BURIAL
INSTALLATION GUIDELINES
 - OPERATING CONDITION
3,785 LITRES (1000us gals) (834 imp gals)
PER DAY OF DOMESTIC RESIDENTIAL SEWAGE
 - INFLUENT
BOD = 250 mg/l
TSS = 250 mg/l
FATS, OIL GREASES = 35 mg/l
 - EFFLUENT (capabilities)
BOD = 10 mg/l
TSS = 10 mg/l
FECAL COLIFORM = < 400 CFU/100ml
TOTAL NITROGEN = 70% Reduction
 - VOLUMETRIC CAPACITY
1ST CHAMBER 2,893 LITRES
2ND CHAMBER 2,893 LITRES
3RD CHAMBER 3,074 LITRES
 - DRY SHIPPING WEIGHT
10,167 kg
 - BURIAL DEPTH
MAXIMUM EARTH COVER (ND CLAY) 610mm
 - FOR INSTALLATION, REFER TO CSA B66,
BC SEWERAGE SYSTEM STANDARD
PRACTICE MANUAL AND INSTALLATION
GUIDELINES PUBLISHED BY PINNACLE
ENVIRONMENTAL TECHNOLOGIES INC.
 - DIMENSIONS in mm.
 - INLET AND OUTLET ACCEPT 100mm S/D
COUPLING
 - EXTENSION FOR SERVICE ACCESS
HATCHES AVAILABLE ON REQUEST.
 - MAXIMUM EARTH COVER AS MEASURED
FROM TANK TOP CENTRE LINE
(NOT INCLUDING RISERS) IS 610mm.
 - FOR HIGH WATER TABLE INSTALLATION
CONTACT PINNACLE
 - CONTACT PINNACLE FOR VEHICLE LOADING

Drawing No:	FWP MCF 1.0-3-01-UV	Date: 12, Oct, 2011	Project Title/Description	Pinnacle Environmental Technologies Inc. Mailing Add: 22867-Fraser Hwy, P.O. Box 12112 Langley, BC Langley, BC, V3A 9J Ph: 604-514-7555 Fax: 604-514-7595 Email: info@peti.ca WebSite: www.peti.ca	
Revision No:	0				
Sheet No:	1 of 1				