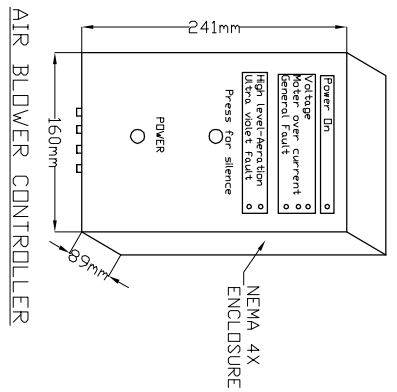
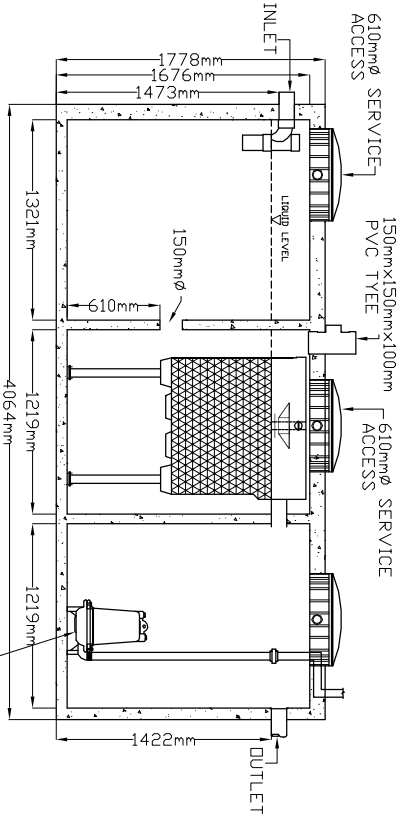


LID TOP VIEW



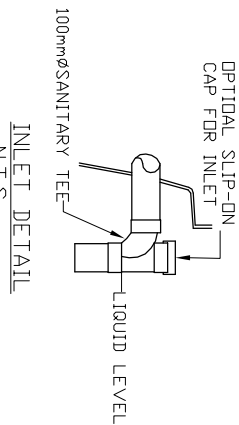
AIR BLOWER CONTROLLER

N.T.S.



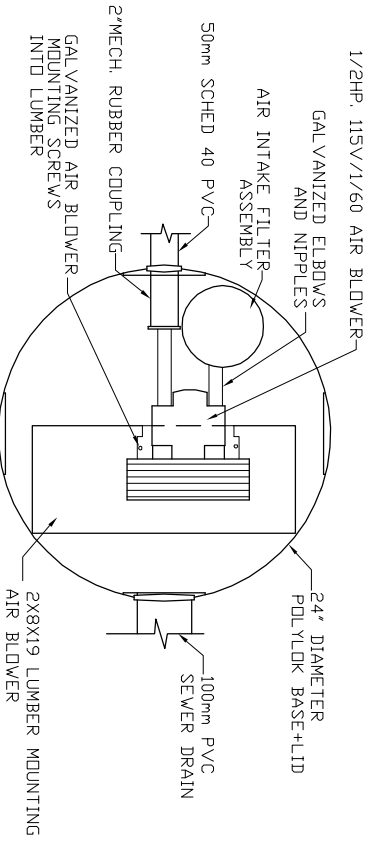
SIDE VIEW

AIR BLOWER INGROUND VAULT



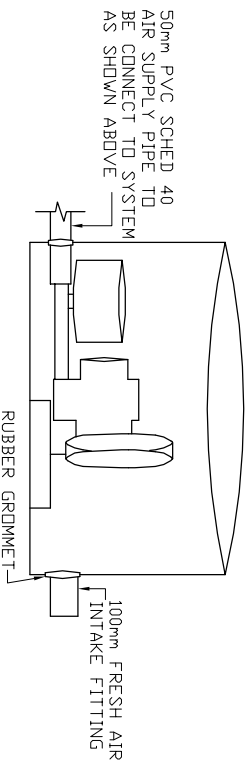
INLET DETAIL

N.T.S.



TOP VIEW

N.T.S.



ELEVATION VIEW

N.T.S.

<p>MicroFAST®1.0 TANK MANUFACTURED BY FRASERWAY PRECAST LTD</p>	
<p>SYSTEM IS DELIVERED FACTORY PRE-ASSEMBLED</p>	
<p>1. CONCRETE TANK MANUFACTURERS MODEL ND: 2,000-1PC-3CH REFER TO MANUFACTURERS SPECIFICATION FOR TANK AND BURIAL INSTALLATION GUIDELINES</p>	
<p>2. OPERATING CONDITION</p>	
3. INFLUENT	<p>BOD = 250 mg/l TSS = 250 mg/l FATS, OIL GREASES = 35 mg/l</p>
4. EFFLUENT (capabilities)	<p>BOD = 10 mg/l TSS = 10 mg/l TOTAL NITROGEN = 70% Reduction</p>
5. VOLUMETRIC CAPACITY	<p>1ST CHAMBER 2,893 LITRES 2ND CHAMBER 2,893 LITRES 3RD CHAMBER 3,074 LITRES</p>
6. DRY SHIPPING WEIGHT	<p>10,167 kg</p>
7. BURIAL DEPTH	<p>MAXIMUM EARTH COVER (ND CLAY) 610mm</p>
8. FOR INSTALLATION, REFER TO CSA B66, BC SEWERAGE SYSTEM STANDARD PRACTICE MANUAL AND INSTALLATION GUIDELINES PUBLISHED BY PINNACLE ENVIRONMENTAL TECHNOLOGIES INC.	
9. DIMENSIONS in mm.	
10. INLET AND OUTLET ACCEPT 100mm S/D COUPLING	
11. EXTENSION FOR SERVICE ACCESS HATCHES AVAILABLE ON REQUEST.	
12. MAXIMUM EARTH COVER AS MEASURED FROM TANK TOP CENTRE LINE (NOT INCLUDING RISERS) IS 610mm.	
13. FOR HIGH WATER TABLE INSTALLATION CONTACT PINNACLE PRIOR TO ORDERING.	
14. FOR VEHICLE TRAFFIC CONTACT PINNACLE PRIOR TO ORDERING.	

Drawing No:	FWP MCF 1.0-3-01	Project Title/Description	Pinnacle Environmental Technologies Inc. Mailing Add: Location: P.O. Box 12112 22867-FraserHwy, Langley, BC, V3A 9J Langley, BC Ph: 604-514-7555 Fx: 604-514-7595 Email: info@peti.ca WebSite: www.peti.ca	
Revision No:	0			MicroFAST®1.0
Sheet No:	1 of 1			Drawn By: S. Mann Scale: 1:50 Date: 12.Oct.2011

