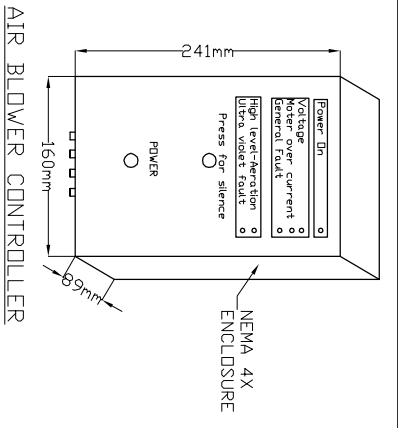
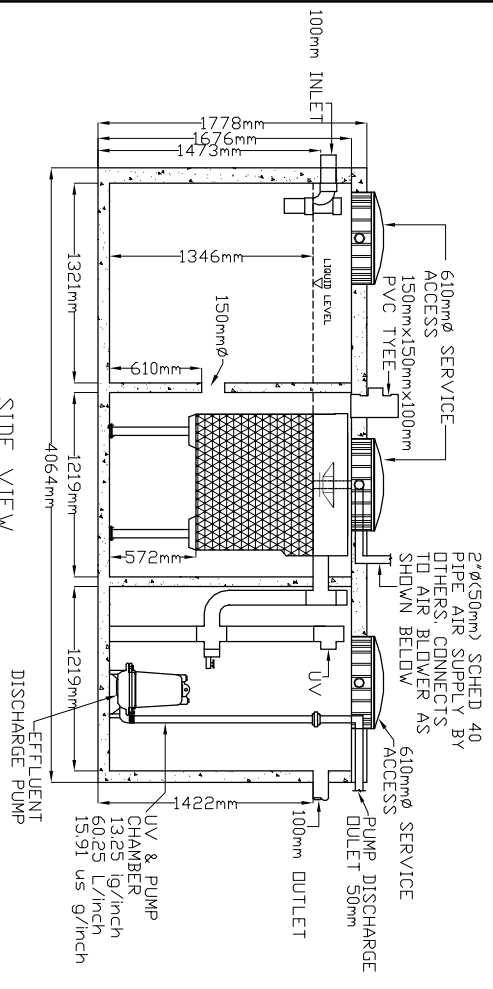


LID TOP VIEW

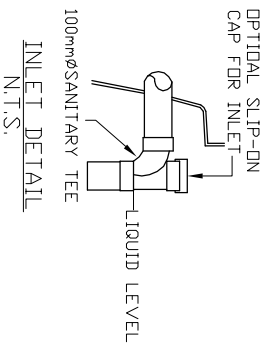


N.T.S.

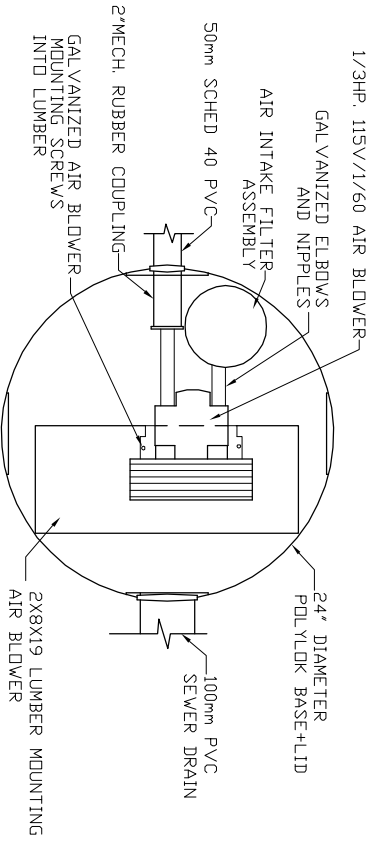


SIDE VIEW

AIR BLOWER INGROUND VAULT

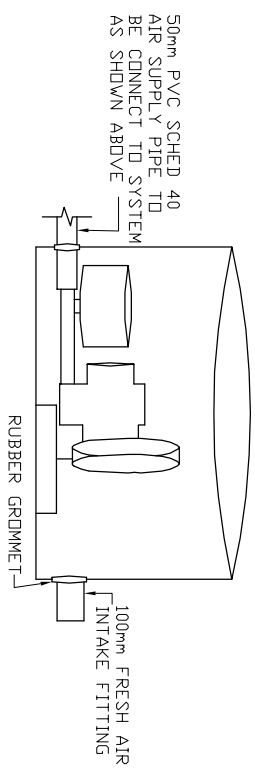


N.T.S.



TOP VIEW

N.T.S.



ELEVATION VIEW

N.T.S.

- MicroFAST® 0.75**
TANK MANUFACTURED BY FRASERWAY PRECAST LTD
- SYSTEM IS DELIVERED FACTORY PRE-ASSEMBLED
- CONCRETE TANK MANUFACTURERS MODEL NO: 2,000-1PC-3CH REFER TO MANUFACTURERS SPECIFICATION FOR TANK AND BURIAL INSTALLATION GUIDELINES
 - OPERATING CONDITION
 2,841 LITRES (750 us gals) (625 imp gals) PER DAY OF DOMESTIC RESIDENTIAL SEWAGE
 - INFLUENT
 BOD = 250 mg/l
 TSS = 250 mg/l
 FATS, OIL GREASES = 35 mg/l
 - EFFLUENT (capabilities)
 BOD = 10 mg/l
 TSS = 10 mg/l
 FECAL COLIFORM = < 400 CFU/100ml
 TOTAL NITROGEN = 70% Reduction
 - VOLUMETRIC CAPACITY
 1ST CHAMBER 2,893 LITRES
 2ND CHAMBER 2,893 LITRES
 3RD CHAMBER 3,407 LITRES
 - DRY SHIPPING WEIGHT
 10,167 kg
 - BURIAL DEPTH
 MAXIMUM EARTH COVER (ND CLAY) 610mm
 - FOR INSTALLATION, REFER TO CSA B66, BC SEWERAGE SYSTEM STANDARD PRACTICE MANUAL AND INSTALLATION GUIDELINES PUBLISHED BY PINNACLE ENVIRONMENTAL TECHNOLOGIES INC.
 - DIMENSIONS in mm.
 - INLET AND OUTLET ACCEPT 100mm S/D COUPLING
 - EXTENSION FOR SERVICE ACCESS HATCHES AVAILABLE ON REQUEST.
 - MAXIMUM EARTH COVER AS MEASURED FROM TANK TOP CENTRE LINE (NOT INCLUDING RISERS) IS 610mm.
 - FOR HIGH WATER TABLE INSTALLATION CONTACT PINNACLE
 - CONTACT PINNACLE FOR VEHICLE LOADING

Drawing No:	FWP 0750-3-01	Project Title/Description	Pinnacle Environmental Technologies Inc. Mailing Address: P.O. Box 12112, Langley, BC Ph: 604-514-7555 Fax: 604-514-7595 Email: info@peti.ca WebSite: www.peti.ca
Revision No:	0		
Sheet No:	1 of 1	Drawn By: S. Mann	
Date:	12.Oct.2011	Scale: 1:50	