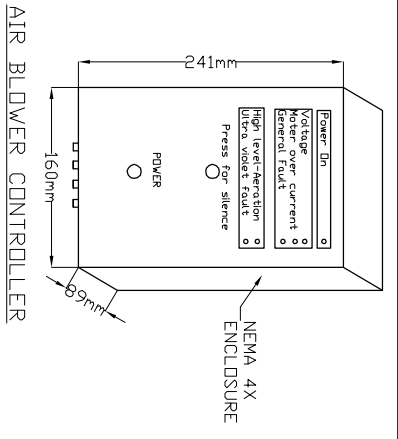
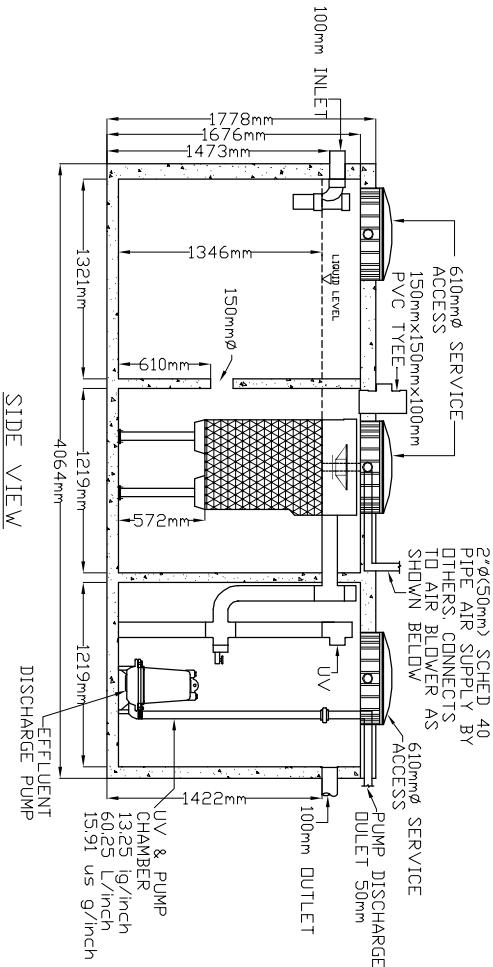


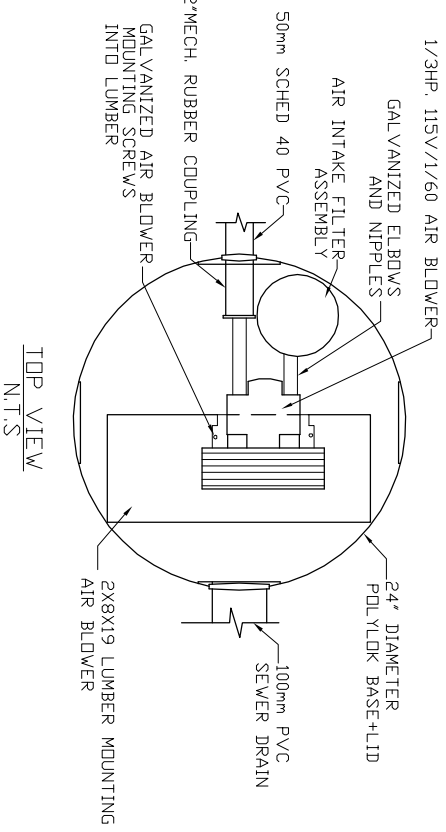
LID TOP VIEW



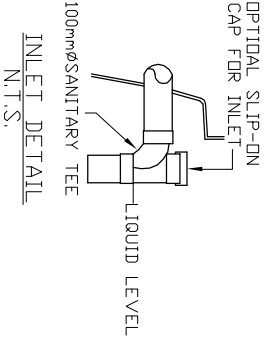
N.T.S.



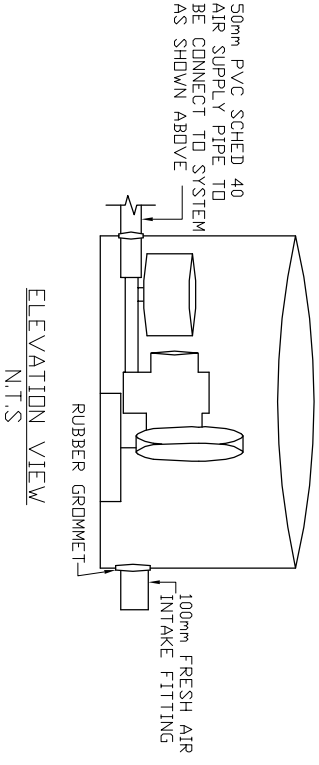
AIR BLOWER INGROUND VAULT



TOP VIEW N.T.S.



INLET DETAIL N.T.S.



ELEVATION VIEW N.T.S.

<p>MicroFAST®0.6 TANK MANUFACTURED BY FRASERWAY PRECAST LTD</p>	
<p>SYSTEM IS DELIVERED FACTORY PRE-ASSEMBLED</p>	
<p>1. CONCRETE TANK MANUFACTURER'S MODEL NO. 2,000-JPC-3CH</p>	
<p>REFER TO MANUFACTURERS SPECIFICATION FOR TANK AND BURIAL INSTALLATION GUIDELINES</p>	
<p>2. OPERATING CONDITION</p>	
<p>2,273 LITRES (600 us gals) (500 imp gals) PER DAY OF DOMESTIC RESIDENTIAL SEWAGE</p>	
3. INFLUENT	
BOD	= 250 mg/l
TSS	= 250 mg/l
FATS, OIL GREASES	= 35 mg/l
4. EFFLUENT (capable to accept)	
BOD	= 10 mg/l
TSS	= 10 mg/l
FECAL COLIFORM	= < 400 CFU/100ml
TOTAL NITROGEN	= 70% Reduction
5. VOLUMETRIC CAPACITY	
1ST CHAMBER	2,892 LITRES
2ND CHAMBER	2,893 LITRES
3RD CHAMBER	3,407 LITRES
6. DRY SHIPPING WEIGHT	10,167 kg
7. BURIAL DEPTH	MAXIMUM EARTH COVER AND CLAY 610mm
8. FOR INSTALLATION, REFER TO CSA B66, BC SEWERAGE SYSTEM STANDARD PRACTICE MANUAL AND INSTALLATION GUIDELINES PUBLISHED BY PINNACLE ENVIRONMENTAL TECHNOLOGIES INC.	
9. DIMENSIONS in mm.	
10. INLET AND OUTLET ACCEPT 100mm S/D COUPLING	
11. EXTENSION FOR SERVICE ACCESS HATCHES AVAILABLE ON REQUEST	
12. MAXIMUM EARTH COVER AS MEASURED FROM TANK TOP CENTRE LINE (NOT INCLUDING RISERS) IS 610mm	
13. FOR HIGH WATER TABLE INSTALLATION CONTACT PINNACLE PRIOR TO ORDERING.	
14. CONTACT PINNACLE FOR VEHICLE LOADING	

Drawing No:	FWP MCF 0.6-3-01-UV	Project Title/Description	Pinnacle Environmental Technologies Inc. Mailing Add: 22867-FraserHwy, P.O. Box 12112 Langley, BC Ph: 604-514-7555 Fx: 604-514-7595 Email: info@peti.ca WebSite: www.peti.ca
Revision No:	0		
Sheet No:	1 of 1		
Date:	12.Oct.2011	Drawn By: S. Mann	
Scale:	1:50		