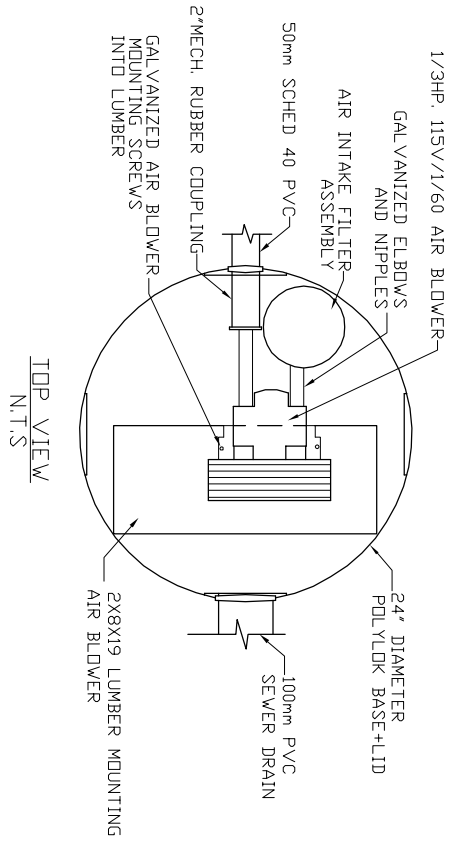
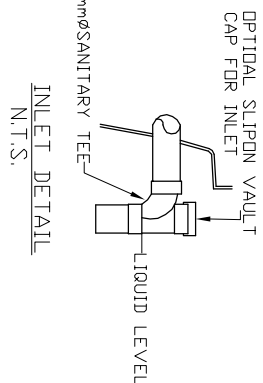


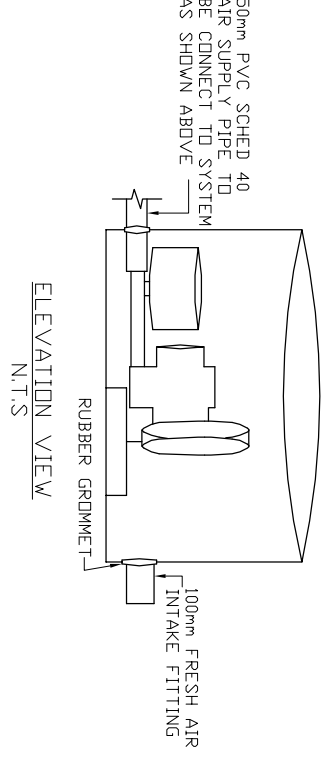
AIR BLOWER INGROUND VAULT



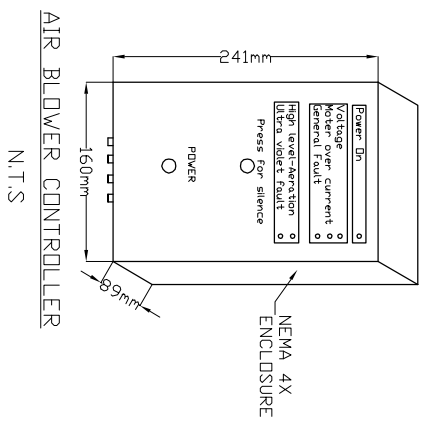
TOP VIEW
N.T.S.



INLET DETAIL
N.T.S.



ELEVATION VIEW
N.T.S.



- MicroFAST® 0.5
MANUFACTURED BY
ABC PRECAST INC
PRE-ASSEMBLED
SYSTEM IS DELIVERED FACTORY
PRE-ASSEMBLED
1. CONCRETE TANK MANUFACTURER'S MODEL
NO: 750-JPC-2CH
REFER TO MANUFACTURERS SPECIFICATION
FOR TANK AND BURIAL
INSTALLATION GUIDELINES
2. OPERATING CONDITION
1,900 LITRES (500 us gals) (416 imp gals)
PER DAY OF DOMESTIC RESIDENTIAL SEWAGE
INFLUENT
3. INFLUENT
BOD = 250 mg/l
TSS = 250 mg/l
FATS, OIL GREASES = 35 mg/l
4. EFFLUENT (capabilities)
BOD = 10 mg/l
TSS = 10 mg/l
TOTAL NITROGEN = 70% Reduction
5. VOLUMETRIC CAPACITY
1ST CHAMBER = 1,325 L
2ND CHAMBER = 2,275 L
6. DRY SHIPPING WEIGHT
3,650 kg
7. BURIAL DEPTH
MAXIMUM EARTH COVER (ND CLAY) 610mm
8. FOR INSTALLATION, REFER TO CSA B66,
BC SEWERAGE SYSTEM STANDARD
PRACTICE MANUAL AND INSTALLATION
GUIDELINES PUBLISHED BY PINNACLE
ENVIRONMENTAL TECHNOLOGIES INC.
9. DIMENSIONS in mm
10. INLET AND OUTLET ACCEPT 100mm S/D
COUPLING
11. EXTENSION FOR SERVICE ACCESS
HATCHES AVAILABLE ON REQUEST.
12. MAXIMUM EARTH COVER AS MEASURED
FROM TANK TOP CENTRE LINE
(NOT INCLUDING RISERS) IS 610mm.
13. FOR HIGH WATER TABLE INSTALLATION
CONTACT PINNACLE PRIOR TO
ORDERING.
14. FOR VEHICLE TRAFFIC CONTACT PINNACLE
PRIOR TO ORDERING.



Pinnacle Environmental Technologies Inc.
Mailing Add: P.O. Box 12112
Langley, Bc, V3A 9J
Email: info@peti.ca
WebSite: www.peti.ca
Location: 22867-FraserHwy,
Langley, Bc
Ph: 604-514-7555 Fax: 604-514-7595

Project Title/Description
MicroFAST 0.5

Drawn By: S. Mann
Scale: 1:50
Date: 12.Oct.2011

Drawing No:	ABC MCF 0.5-2-01
Revision No:	0
Sheet No:	1 of 1