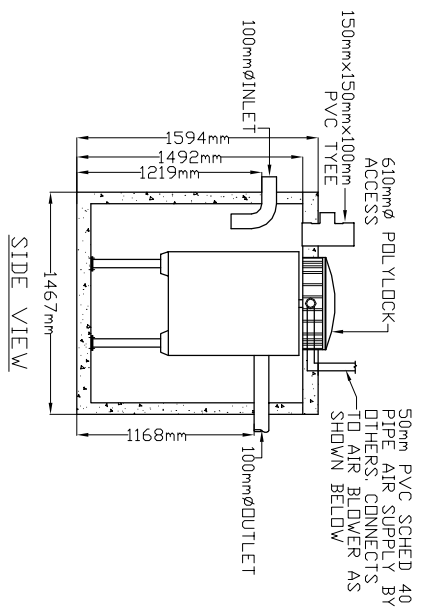
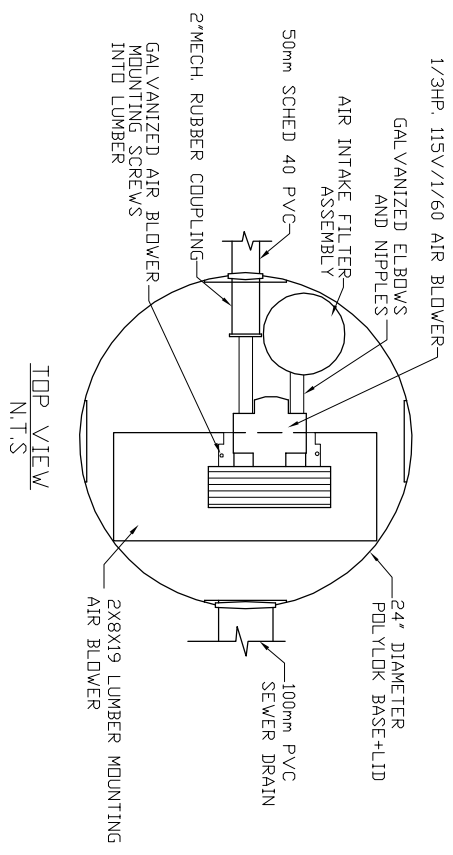


LID TOP VIEW

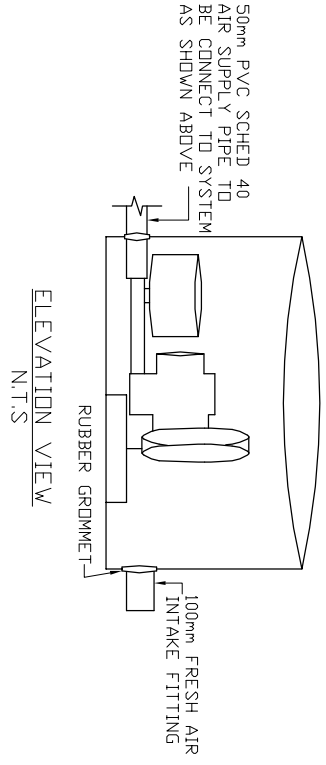


SIDE VIEW

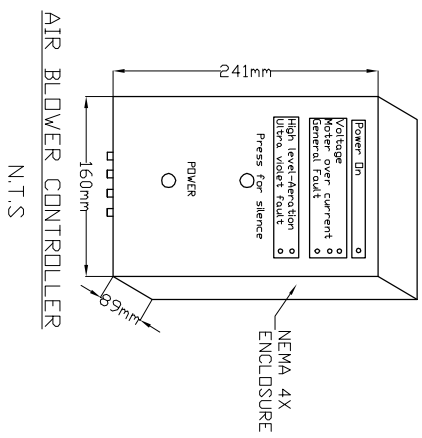
AIR BLOWER INGROUND VAULT



TOP VIEW  
N.T.S.



ELEVATION VIEW  
N.T.S.



AIR BLOWER CONTROLLER  
N.T.S.

- MicroFAST® 0.375  
TANK MANUFACTURED BY  
ABC PRECAST INC  
SYSTEM IS DELIVERED FACTORY  
PRE-ASSEMBLED
- CONCRETE TANK MANUFACTURER'S MODEL  
ND: 400-1PC-1CH  
REFER TO MANUFACTURER'S SPECIFICATION  
FOR TANK AND BURIAL  
INSTALLATION GUIDELINES
  - OPERATING CONDITION  
1,420 LITRES (375 us gals) (312 imp gals)  
PER DAY OF DOMESTIC RESIDENTIAL SEWAGE  
TRASH COLLECTION TANK  
SHALL BE A MINIMUM OF 1/2 AND A MAXIMUM  
OF 1.5 TIMES THE DAILY DESIGN FLOW AND  
PROVIDED BY OTHERS.
  - INFLUENT  
BOD = 250 mg/l  
TSS = 250 mg/l  
FATS, OIL GREASES = 35 mg/l
  - EFFLUENT (capabilities)  
BOD = 10 mg/l  
TSS = 10 mg/l  
TOTAL NITROGEN = 70% Reduction  
6. VOLUMETRIC CAPACITY  
SINGLE CHAMBER = 1,820 L  
2,250 kg
  - BURIAL DEPTH  
MAXIMUM EARTH COVER (ND CLAY) 610mm
  - FOR INSTALLATION, REFER TO CSA B66,  
BC SEWERAGE SYSTEM STANDARD  
PRACTICE MANUAL AND INSTALLATION  
GUIDELINES PUBLISHED BY PINNACLE  
ENVIRONMENTAL TECHNOLOGIES INC.
  - DIMENSIONS in mm
  - INLET AND OUTLET ACCEPT 100mm S/D  
COUPLING
  - EXTENSION FOR SERVICE ACCESS  
HATCHES AVAILABLE ON REQUEST.
  - MAXIMUM EARTH COVER AS MEASURED  
FROM TANK TOP CENTRE LINE  
(NOT INCLUDING RISERS) IS 610mm.
  - FOR HIGH WATER TABLE INSTALLATION  
CONTACT PINNACLE PRIOR TO  
ORDERING.
  - FOR VEHICLE TRAFFIC CONTACT PINNACLE  
PRIOR TO ORDERING.



Pinnacle Environmental Technologies Inc.  
Mailing Add: Location:  
P.O. Box 12112 22867-FraserHwy,  
Langley, BC, V3A 9J Langley, BC  
Ph: 604-514-7555 Fx: 604-514-7595  
Email: info@peti.ca  
WebSite: www.peti.ca

Drawing No:	ABC MCF 0.375-1-01	Project Title/Description ® MicroFAST 0.375
Revision No:	0	
Sheet No:	1 of 1	
Date:	12.Oct.2011	Drawn By: S. Mann
Scale:	1:50	